



# AFRICAN PRIDE

## IRENE COUNTRY LODGE

IRENE, GAUTENG

### AUTOGRAPH COLLECTION® HOTELS

## BIRD & TREE GUIDE

TEL: +27 12 667 6464 | IRENECOUNTRYLODGE.CO.ZA | WHATSAPP: +27 66 516 9586

*We have put together this interactive document to let you record which trees you have already spotted by clicking on the dot next to the tree, as you walk along the property.*

*For assistance on where to go, head on over to our visitor guide and follow the jogging trail (the dotted line) to see all the trees listed.*

**THE FARM IN THE CITY**



**VISITOR GUIDE**



*Introduction to our tree life*

The Irene Champion

**RIVER RED GUM** *Spring*

National Tree No: SA: X799

*Eucalyptus camaldulensis*

*Stem Ø breast height: 2.03m*

*Crown Ø 25.5m | Height: 41m*

Large evergreen tree with a short, thick stem and large, spreading crown; invading watercourses. Bark shed in long, thin strips, exposing smooth, white and reddish patches. Branchlets reddish. Adult leaves drooping, lanceolate to narrowly lanceolate. 7-11 flowered clusters, cream to whitish.

PROTECTED & CLASSIFIED  
BY THE DEPARTMENT OF AGRICULTURE,  
FORESTRY & FISHERIES AS A CHAMPION  
TREE OF SOUTH AFRICA  
DAFF.GOV.ZA





## KAREE

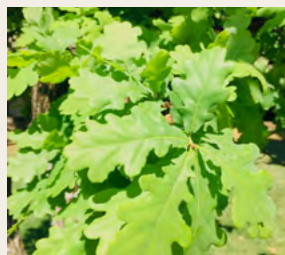
### Winter-Spring

*Searsia Lancea (Rhus lancea)*

Family: *Anacardiaceae*

**National Tree No: SA: 386**

Small to medium-sized evergreen tree.



## ENGLISH OAK

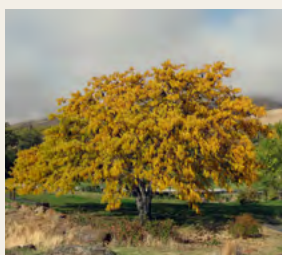
### Spring

*Quercus Robur*

Family: *Fagaceae*

**National Tree No: SA: X312**

Easily identified by the shape of its leaves.



## HONEY LOCUST

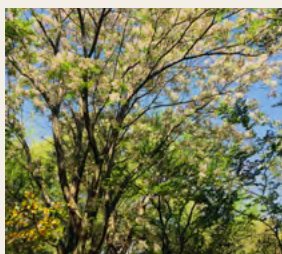
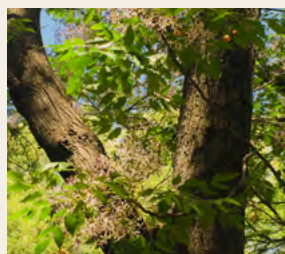
### Spring

*Gleditsia Triacanthos*

Family: *Fabaceae*

**National Tree No: SA: X537**

A deciduous, spreading tree 15-20m tall.



## CHINABERRY

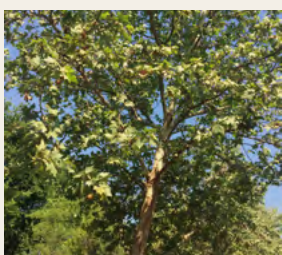
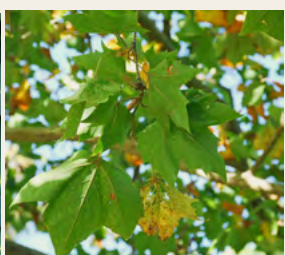
**(Pride of India) | Spring**

*Melia Azedarach*

Family: *Meliaceae-Mahogany*

**National Tree No: SA: X537**

Flowers are small and fragrant with pale purple or lilac petals.



## LONDON PLANE

### Spring / Winter

*Platanus x Acerifolia*

Family: *Platanaceae*

**National Tree No: SA: X419**

Grown extensively as a street and garden tree.



## WHITE MULBERRY

### Spring

*Morus Alba*

Family: *Moraceae*

**National Tree No: SA: X326**

A deciduous tree growing up to 15m high.



## WHITE STINKWOOD

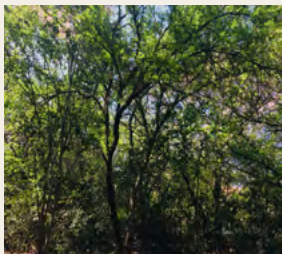
### Spring

*Celtis Africana*

Family: *Ulmaceae*

**National Tree No: SA: 39**

Medium to large deciduous tree.



## SWEET THORN

### Spring-Summer

*Acacia Karroo*

Family: *Vachelia*

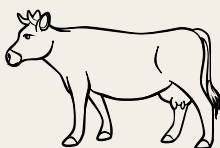
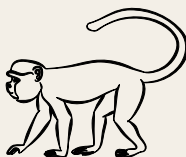
**National Tree No: SA: 172**

Shrub to medium-sized tree. Flowers bright yellow.

**OUR FOUR SPA ROOMS AT CAMDEBOO DAY SPA  
HAVE BEEN NAMED AFTER FOUR OF THESE MAJESTIC TREES**



Tick which animals you have spotted whilst visiting us. Once you've spotted & ticked 3 animals, go to the Deli to claim your **FREE IRENE FARM** flavoured milk!



*Moo-ander  
through  
the farm!*



WHEN VISITING THE FARM  
PLEASE TAKE NOTE OF  
IRENE FARM'S RULES



**PLEASE NOTE THE FOLLOWING:**  
IRENE FARM A IS A CASHLESS ENVIRONMENT,  
ALL MAJOR CREDIT & DEBIT CARDS ACCEPTED  
OUR GATE CLOSES AT 18:00

**INDEMNITY**

You are now entering a 130 year old working dairy farm. Entry is entirely at your risk and Irene Estate (Pty) Ltd and its staff and animals do not accept or take any responsibility or liability for any loss, damage, accident or injury to any person or their property while on this farm precinct whether caused as a result of negligence of its staff or the behaviour of its cows or any cause whatsoever.

**Children under the age of 16 must be accompanied by an adult.**

**- IMPORTANT NOTICE: DISCLAIMER -**

The playground areas and facilities are used entirely at your and your children's own risk. Irene Estate (Pty) Ltd, Irene Townships (Pty) Ltd trading as "The Barn Restaurant, The Deck, and The Deli" as well as all employees, managers and representatives (of any form) of the aforesaid entities (all of whom are hereinafter referred to as "Irene Estate") do not accept any liability or responsibility for any personal injury, harm, death or any other damages of whatsoever cause or nature whether arising from negligence or any other cause whatsoever which is suffered by any child or person in the playground area, or whilst using any of the Irene Estates facilities or on Irene Estates premises or any other premises managed or controlled by Irene Estates. All persons entering these premises or any other premises owned, managed or controlled by Irene Estate, do so entirely at their own risk. Children are not to use the playground area or any playground facilities without the parent/guardian/in loco parents ensuring that there is constant adult supervision. Irene Estate does not provide this supervision.



**BLANKETS**



**BRAAI  
PICNICS**



**ANIMALS**



**CAMPING  
CHAIRS**



**CASH**



**FOOD  
DRINKS**

Kindly note that being a food and beverage establishment, bringing your own food, picnic baskets, blankets or deck chairs onto the premises is prohibited.



**PROFESSIONAL PHOTOGRAPHY**

Kindly note that should your primary purpose of visiting the FARM be for a photoshoot, a donation of R350 to the local Smuts House Museum, is asked for in return. This must be arranged in advance at the office, opposite The Deli, Monday - Friday 07:30 - 16:30 - 012 667 1000.



All birds listed are common residents to Irene, whereas the Black swan and Rose-ringed parakeet is unique to Irene.

## Introduction to our bird life

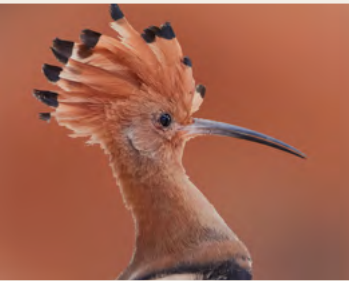
### ROSE-RINGED PARAKEET

(*Psittacula krameri*)

Height: 40cm | Weight: 127g

Long slender tail. Black half-collar bordered below by rose-pink strip that extends to hindneck. This dark half-collar is absent in the female, but some have an emerald collar.

Unique to Irene



### AFRICAN HOOPOE

*Upupa africana*

Height: 26cm | Weight: 53g

Crest usually held flattened, forming a long point behind the crown, and only raised when bird lands.



### AFRICAN PALM SWIFT

*Cypsiurus parvus*

Height: 15cm | Weight: 14g

Small, slim, plain-plumaged swift with distinctive long, narrow, scythe-shaped wings and deeply forked tail.

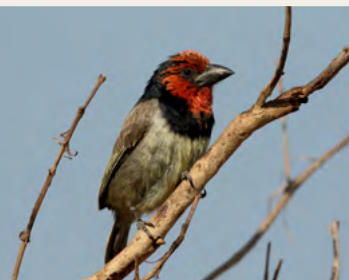


### AFRICAN SACRED IBIS

*Threskiornis aethiopicus*

Height: 77cm | Weight: 1.5kg

Plumage distinctive; blue-black scapular plumes extent over lower back and tail.



### BLACK-COLLARED BARBET

*Lybius torquatus*

Height: 20cm | Weight: 54g

Bright red face, throat and upper breast, bordered by broad black collar. Shade of red varies from bright scarlet to salmon pink.

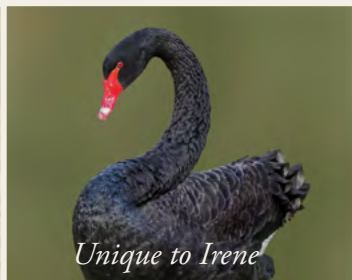


### BLACKSMITH LAPWING

*Vanellus armatus*

Height: 30cm | Weight: 166g

Distinctive black, white and grey plumage, and black legs.



Unique to Irene

### BLACK SWAN

*Cygnus atratus*

Height: 142cm | Weight: 9kg

Plumage is black but its flight feathers, which are only visible when it is flying, are white in colour. It has a bright red bill with a white stripe across its tip. Its eyes are red.



**CAPE GLOSSY STARLING**  
*Lamprotornis nitens*  
**Height: 23cm | Weight: 90g**  
Sheen more blue than green and lacks darker ear coverts of other similar species.  
Eyes orange-yellow.



**CAPE ROBIN-CHAT**  
*Cossypha caffra*  
**Height: 17cm | Weight: 28g**  
Pale orange throat and grey sides to neck, breast and belly diagnostic.



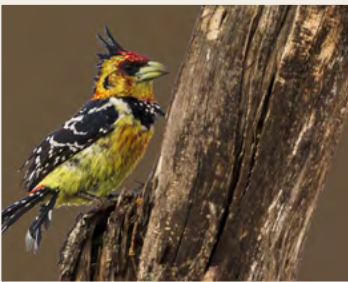
**CAPE TURTLE-DOVE**  
*Streptopelia capicola*  
**Height: 27cm | Weight: 153g**  
Overall grey plumage with back collar, white outer tail feathers. Black collar on hindneck narrowly rimmed with white.



**CAPE WAGTAIL**  
*Motacilla capensis*  
**Height: 20cm | Weight: 21g**  
Drab gey-brown plumage. Grey-brown upperparts.



**COMMON MOORHEN**  
*Gallinula chloropus*  
**Height: 34cm | Weight: 260g**  
Combination of white flank stripe, red base to yellow-tipped bill and rounded red frontal shield diagnostic.



**CRESTED BARBET**  
*Trachyphonus vaillantii*  
**Height: 24cm | Weight: 74g**  
Yellow face speckled with red, black crest and chest band.



**CROWNED LAPWING**  
*Vanellus coronatus*  
**Height: 31cm**  
**Weight: 185g**  
Sandy brown upperparts, bright red bill and legs, and distinctive head pattern.



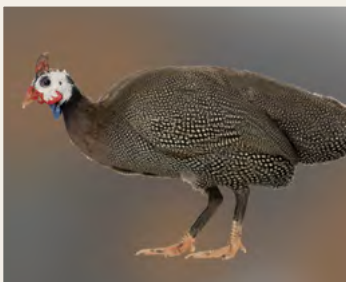
**EGYPTIAN GOOSE**  
*Alopochen aegyptiac*  
**Height: 68cm | Height: 2.1kg**  
Dark patches on eye and breast, red legs.



**GREY GO-AWAY-BIRD/-LOURIE**  
*Corythaixoides concolor*  
**Height: 49cm | Weight: 270g**  
Very distinctive all-grey bird, common in the bushveld.



**HADEDDE IBIS**  
*Bostrychia hagerdash*  
**Height: 76cm | Weight: 1.25kg**  
Larger, heavier billed and overall paler plumage than Glossy Ibis.



**HELMETED GUINEA-FOWL**  
*Numida meleagris*  
**Height: 56cm | Weight: 1.35kg**  
Bony casque on head, red facial skin and blue upper neck.



**HOUSE SPARROW**  
*Passer domesticus*  
**Height: 14.5cm | Weight: 26g**  
Male: Bib extends to upper breast, grey rump. Female: Dull grey brown with pale eyebrow.





**LAUGHING DOVE**  
*Streptopelia senegalensis*  
**Height: 25cm | Weight: 100g**  
Pinkish-grey head and rufous chest with black spotting, lacks black collar on hindneck.



**PIED CROW**  
*Corvus albus*  
**Height: 49cm | Weight: 550g**  
White breast extending to broad white collar on hindneck unmistakable.



**RED-FACED MOUSE-BIRD**  
*Urocolius indicus*  
**Height: 32cm | Weight: 56g**  
Soft grey plumage has green sheen to upperparts if seen in good light. Bare red skin around eyes distinctive.



**RED-KNOBBED COOT**  
*Fulica cristata*  
**Height: 39cm | Weight: 730g**  
All-black plumage, white bill and frontal shield conspicuous. 2 red knobs above shield more conspicuous during breeding season.



**SOUTHERN GREY-HEADED SPARROW**  
*Passer diffusus*  
**Height: 15cm | Weight: 24g**  
Pale grey head, chestnut shoulders and rump, and white wingbar distinctive. raised when bird lands.



**SOUTHERN MASKED-WEAVER**  
*Ploceus velatus*  
**Height: 15cm | Weight: 34g**  
Plain back, red eyes, heavier bill, yellow crown and brownish-pink legs.



**SOUTHERN RED BISHOP**  
*Euplectes orix*  
**Height: 13cm | Weight: 23g**  
Breeding male: Black forehead and brown wings and tail.



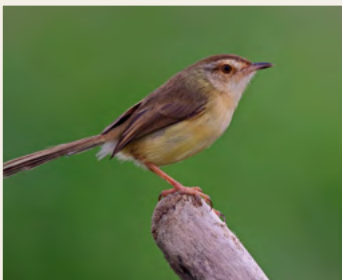
**SPECKLED MOUSEBIRD**  
*Colius striatus*  
**Height: 33cm | Weight: 55g**  
Overall brown appearance, black face and black and white bill.



**SPECKLED PIGEON**  
*Columba guinea*  
**Height: 30cm | Weight: 344g**  
Rusty brown plumage with white spotted wings, red eye-ring, and red legs diagnostic. In flight, black terminal tail bar distinctive.



**SPOTTED THICK-KNEE**  
*Burhinus capensis*  
**Height: 43cm | Weight: 465g**  
Overall spotted appearance, and large yellow eyes distinctive.



**TAWNY-FLANKED PRINIA**  
*Prinia subflava*  
**Height: 13cm | Weight: 9.5g**  
Buffy underparts and flanks and rufous wing panel distinguish it from non-breeding and juvenile. Pale eyebrow.



**YELLOW-BILLED DUCK**  
*Anas undulata*  
**Height: 57cm | Weight: 890g**  
Dark brown with yellow markings. Grey feet and -bill with yellow sides. Dark eye-line & ear spot.